

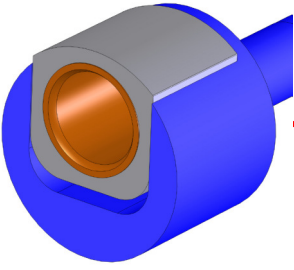


"L" TRIPLE AND DOUBLE BODY PUMPS SERIES- HEAVY DUTY PROCESS PUMPS - HIGH FLOWRATE

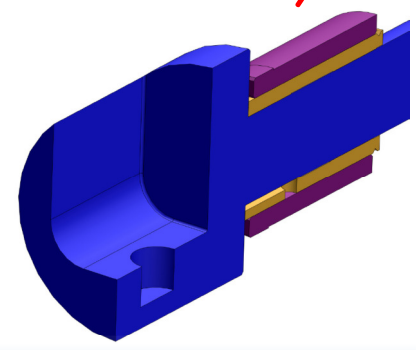


HIGH CAPACITY BYPASS VALVE

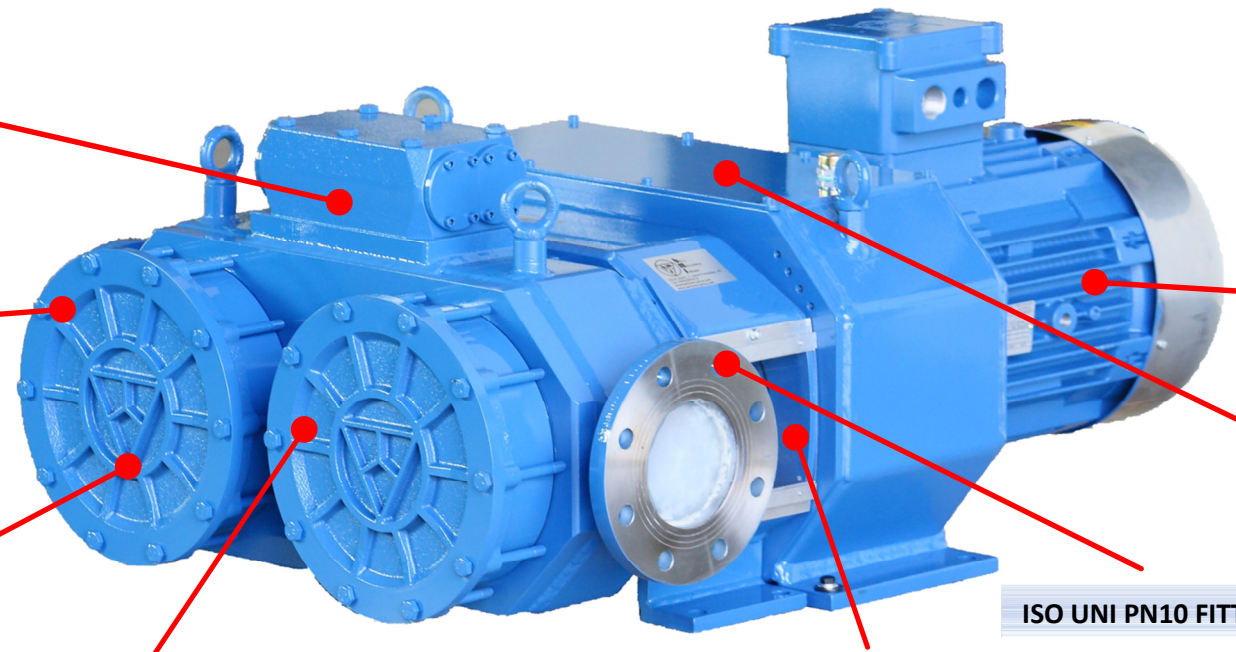
ORINGS SEALED BODY



GUIDED IMPELLER BEARING SYSTEM



ROBUST SHAFT WITH OVERSIZED BUSHING WITH WEARING SLEEVE

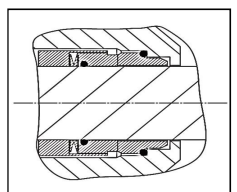


AVAILABLE:
ATEX ELECTRIC MOTOR
DOUBLE SPEED MOTOR
INVERTER SPEED VARIATOR

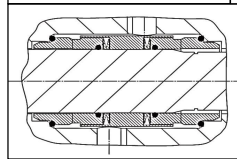
GEARBOX WITH INSPECTION COVER:
-EASY AND QUICK PUMP MAINTENANCE

ISO UNI PN10 FITTINGS

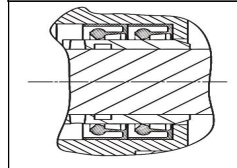
AVAILABLE REAR EXTERNAL SEALS:



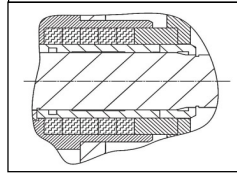
DIN MECHANICAL SEAL



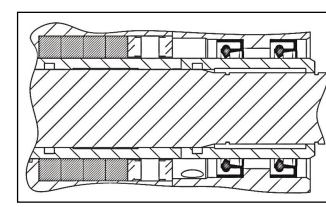
**DOUBLE PRESSURIZED MECHANICAL SEAL
API PLAN SEALS AVAILABLE**



**VITON OR PTFE
MULTIPLE LIP SEAL**



PACKING SEAL



**ARRANGEMENT OF
PACKING + RING SEAL
WITH FLUSHING**

