



"L" HEAVY DUTY PUMP SERIES – EXTERNAL SEAL

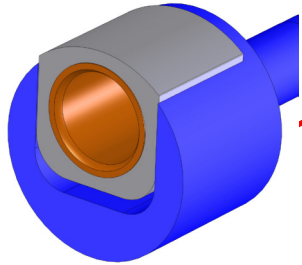


AVAILABLE:
BYPASS VALVE OR
CLOSING PLATE

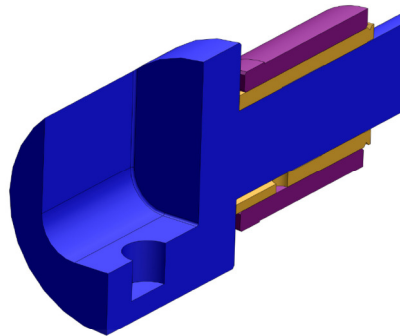
ISO UNI PN10 FITTINGS

IN-LINE FLANGED
COUPLING:
NO MISALIGNMENT
NO VIBRATIONS

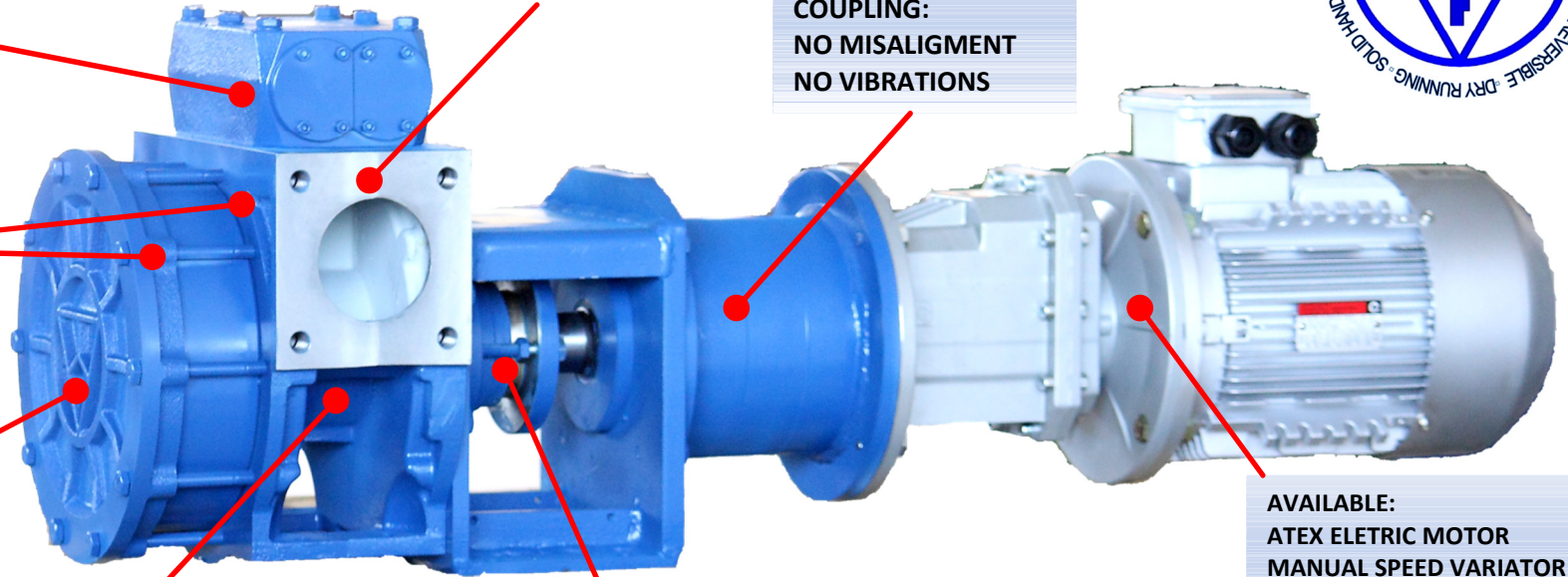
ORINGS SEALED BODY



GUIDED IMPELLER
BEARING SYSTEM

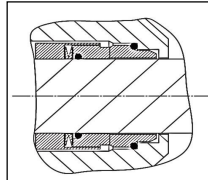


ROBUST SHAFT WITH OVERSIZED
BUSHING WITH WEARING SLEEVE

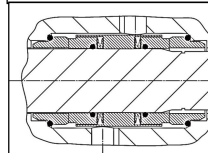


AVAILABLE:
ATEX ELETRIC MOTOR
MANUAL SPEED VARIATOR
INVERTER SPEED VARIATOR

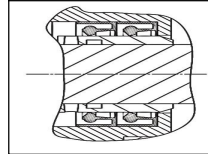
AVAILABLE REAR EXTERNAL SEALS:



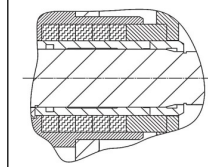
DIN MECHANICAL
SEAL



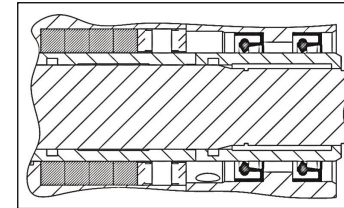
DOUBLE MECHANICAL
SEAL



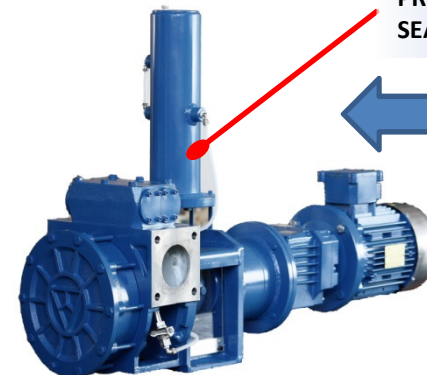
VITON OR PTFE
MULTIPLE LIP SEAL



PACKING SEAL



ARRANGEMENT OF
PACKING + RING SEAL
WITH FLUSHING



PRESSURIZED DOUBLE
SEAL SYSTEM

AVAILABLE IN API
VERSION WITH API
SEAL PLANS
(API PLAN 53 IN
PICTURE)