



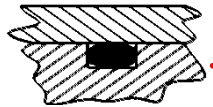
"MAG" MAGNETIC COUPLING PUMPS



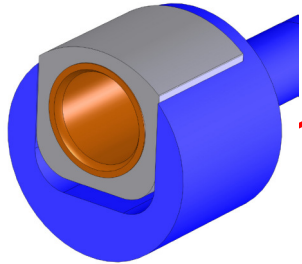
AVAILABLE:
BYPASS VALVE OR
CLOSING PLATE

THERMAL PROBE

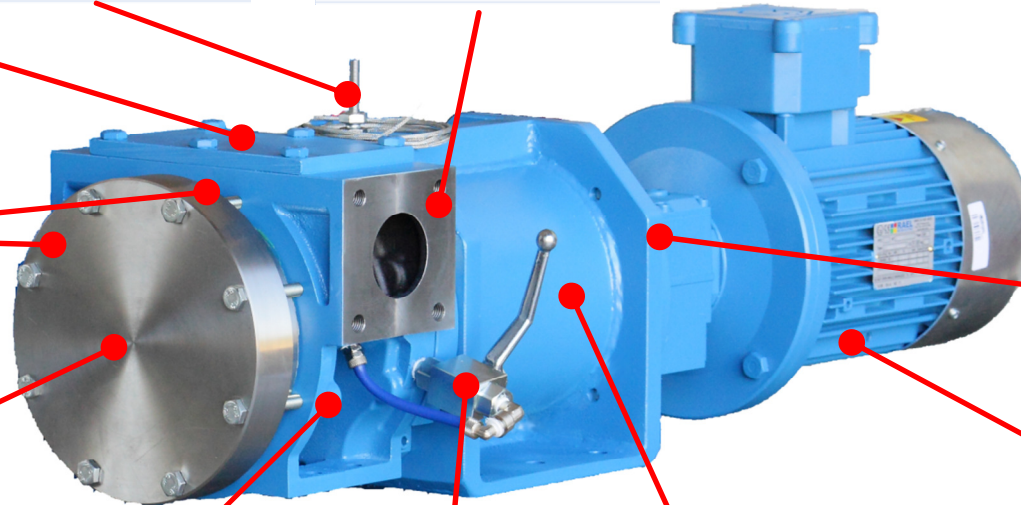
ISO UNI PN10 FITTINGS



ORINGS SEALED BODY



GUIDED IMPELLER
BEARING SYSTEM



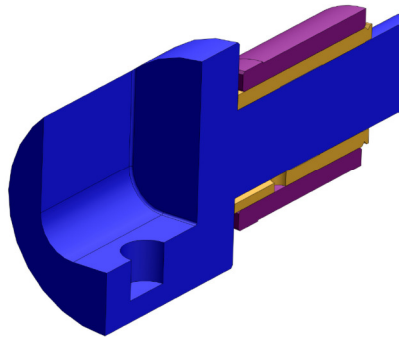
IN-LINE FLANGED
COUPLING:
NO MISALIGNMENT
NO VIBRATIONS

AVAILABLE:
ATEX ELETRIC MOTOR
MANUAL SPEED VARIATOR
INVERTER SPEED VARIATOR

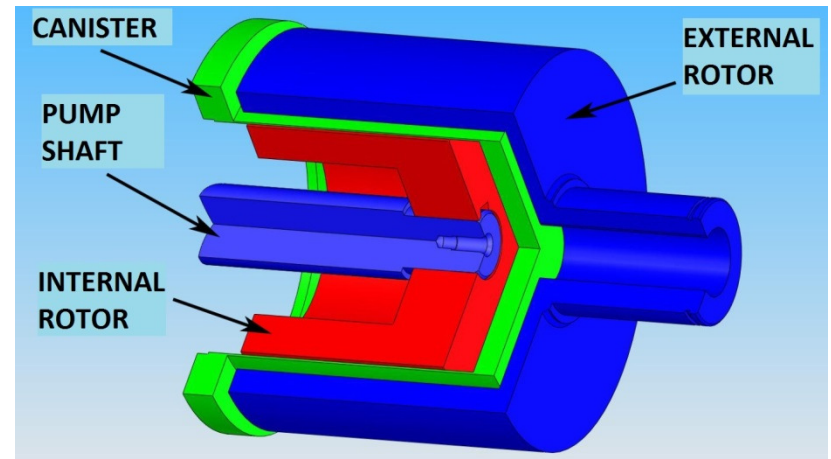
FLUSHING ADJUSTING VALVE

MAGNETIC COUPLING:

- NO SEAL
- NO LEAKAGES



ROBUST SHAFT WITH OVERSIZED
BUSHING WITH WEARING SLEEVE



CANISTER

PUMP
SHAFT

INTERNAL
ROTOR

EXTERNAL
ROTOR